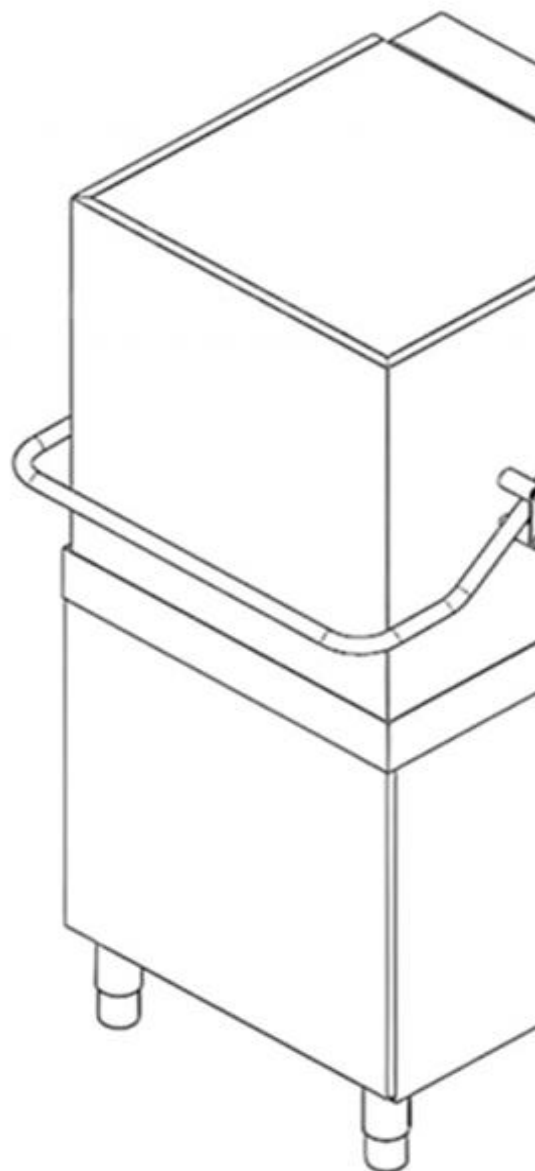
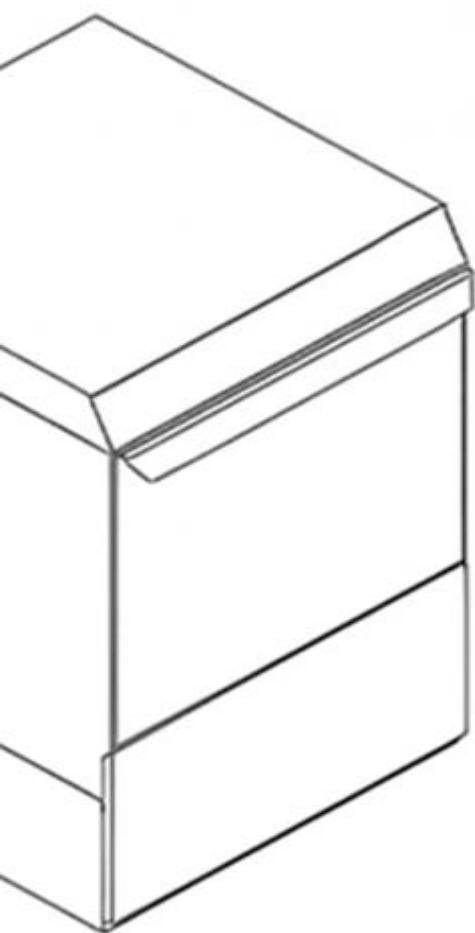


ENGLISH




# MANUAL INSTRUCTIONS

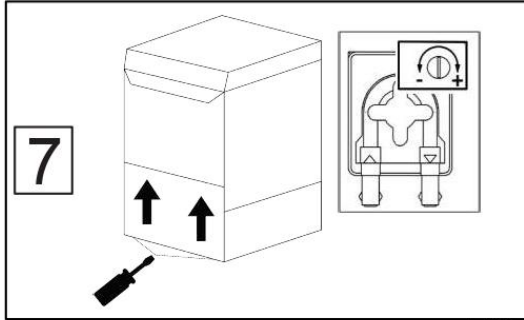
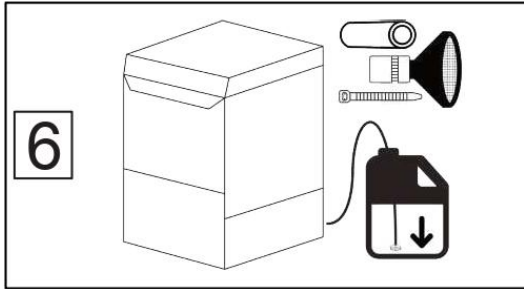
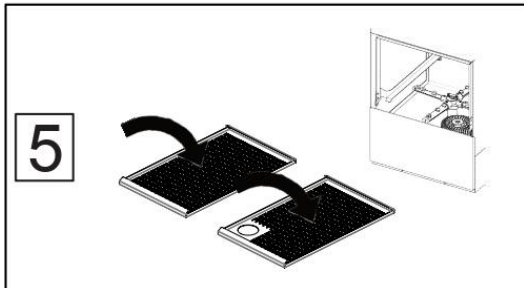
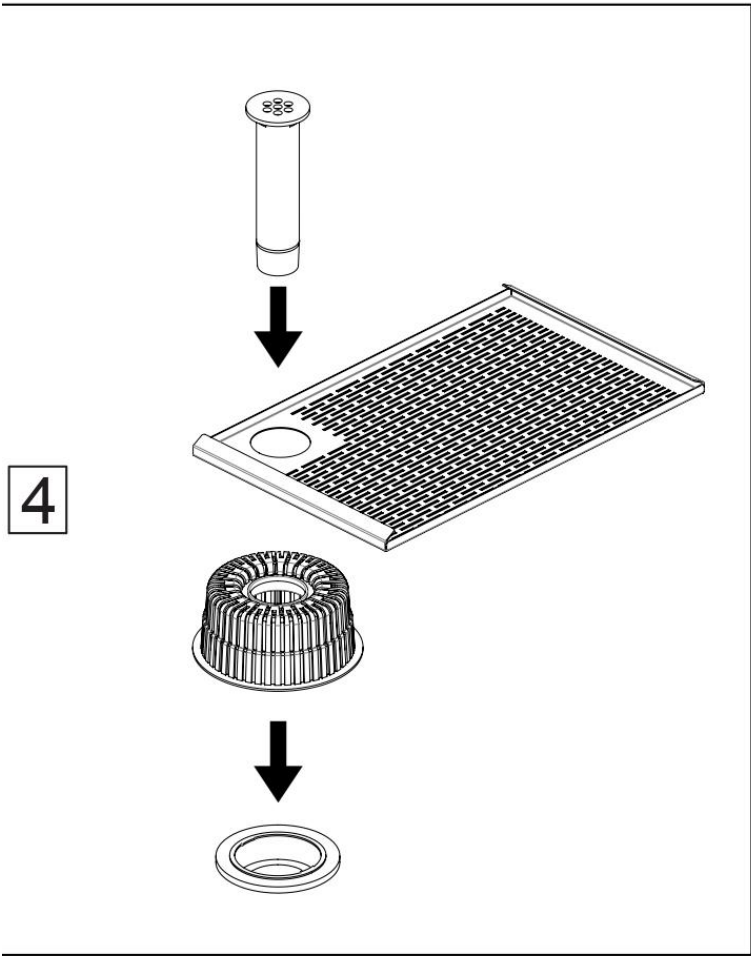
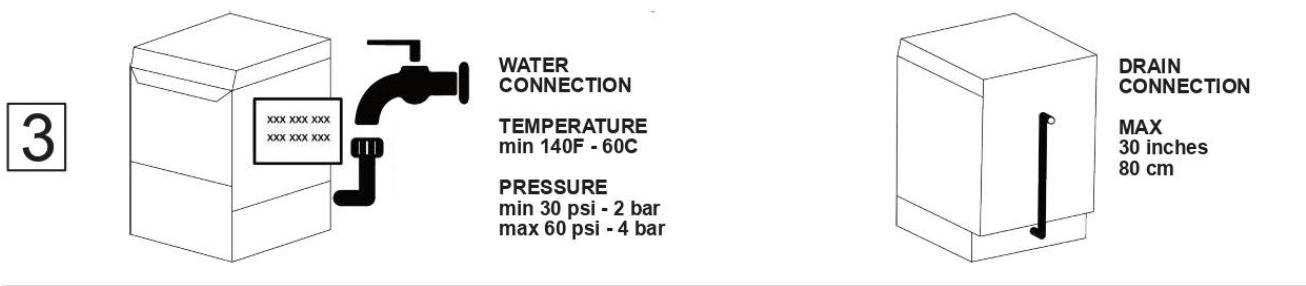
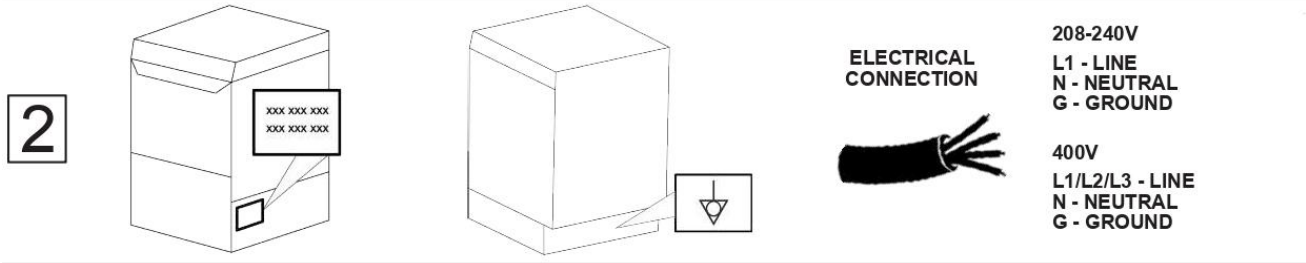
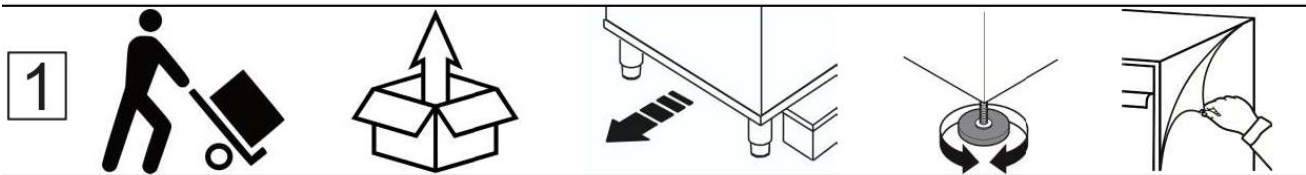
## PROFESSIONAL DISHWASHER

NORTH AMERICA





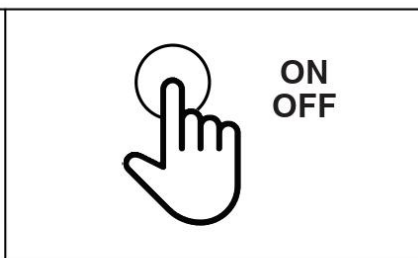
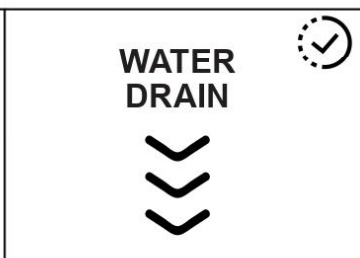
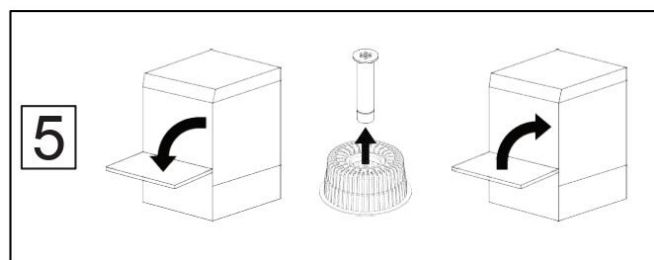
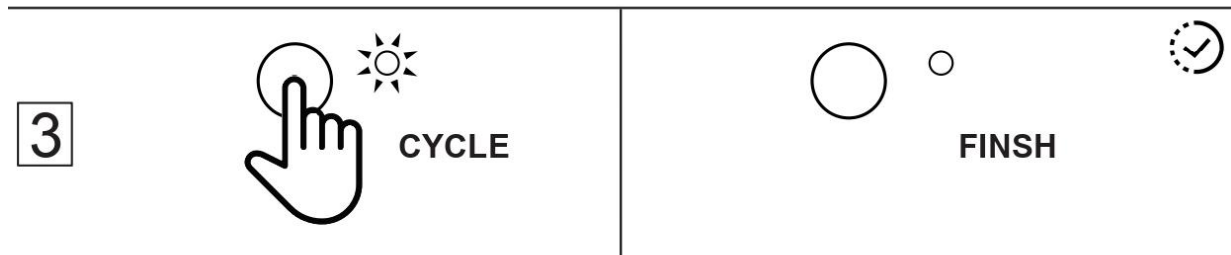
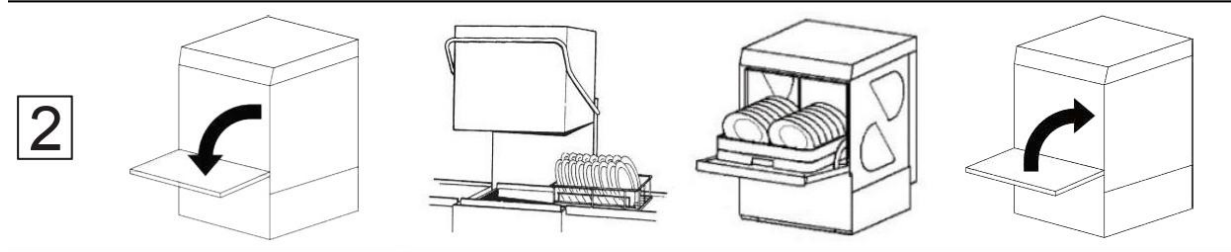
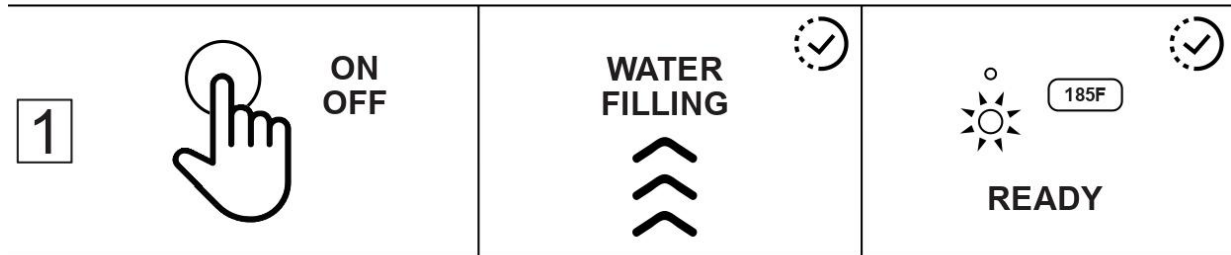
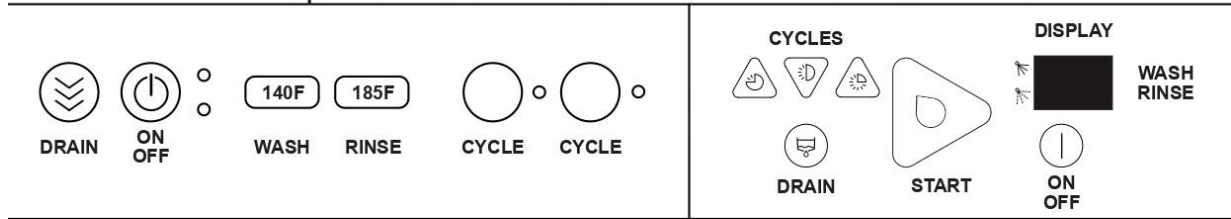
	CAUTION: Failure to comply may compromise people's safety or damage of the appliance.
	Additional information and suggestions.
	For safety children are prohibited from using the appliance.



mechanical push button control

(some features may not be available)

LED electronic control



<b>1. WARNINGS</b> .....	<b>6</b>
1A - GENERAL .....	6
1B - TRASPORT .....	6
1C - INSTALLER.....	6
1D - HYDRAULIC CONNECTION.....	6
1E - ELECTRICAL CONNECTION.....	7
1F - USER.....	7
1G - CLEANING / MAINTENANCE.....	7
<b>2. INSTALLER INSTRUCTIONS</b> .....	<b>8</b>
2A - TRASPORT.....	8
2B - UNPACKING / POSITIONING.....	8
2C - TECHNICAL SPECIFICATIONS .....	9
2D - DATA PLATE.....	10
2E - FRONT LOADING RACK SUPPORT INSTALLATION (pass through models) .....	10
2F - HYDRAULIC CONNECTION / WATER DRAINING.....	10
2G - ELECTRICAL CONNECTION.....	11
2H - PREPARATION / CHEMICAL DISPENSER SETTING .....	12
2L - THERMO STOP ACTIVATION .....	13
2M - MAINTENANCE .....	14
2N - UNINSTALLATION (long period of inactivity) .....	15
<b>3. USER INSTRUCTIONS</b> .....	<b>16</b>
3A - GENERAL WARNINGS / WARRANTY / BEFORE STARTING.....	16
3B - PRODUCT DESCRIPTION / PARTS POSITIONING.....	18
3C - START OF THE MACHINE / WASH CYCLE <b>mechanical control buttons</b> .....	19
3E - CLEANING/MAINTENANCE.....	24
<b>4. WARNING MESSAGES</b> .....	<b>27</b>
4A - FUNCTION MESSAGE DISPLAY <b>mechanical control buttons</b> .....	28
4B - DISPLAY ERROR MESSAGE <b>electronic control buttons</b> .....	29
4C - DISPLAY ERROR MESSAGE <b>mechanical control buttons</b> .....	30
<b>5. TROUBLESHOOTING</b> .....	<b>31</b>



THANKS FOR CHOOSING THIS PRODUCT



## 1A – GENERAL

- Read the manual instruction carefully before starting the machine. These warnings provide important information regarding safety during installation. **Failure to comply with the provided instructions on the attached documentation may cause serious or fatal injuries to people, compromise the safety of the machine and immediately void of the warranty.**
- This manual contains instructions applicable only to the type of dishwasher indicated.
- The manufacturer reserves the right to make changes to the dishwasher and/or update previous manuals without giving notice.
- This appliance is specifically designed to wash dishes.
- The manufacturer does not have responsibility to any damage of the product, to people or things caused by failure to follow the instructions and use of the machine.
- This manual is an integral part of the dishwasher and must be shared with all personnel involved in the management, operation, maintenance and control of the machine.
- This manual must be accessible for quick use in case of necessity, close to the machine, in a clean area, legible and intact.
- **Failure to comply with the following may compromise the safety of people, machine and immediately loss of warranty:**
  - Installation, uninstallation, maintenance, adjustment, repair or any type of intervention that involves the removal of the protection panels if not carried out by qualified and authorized personnel who respect these instructions or who in any case do not disconnect and electrically and hydraulically isolate the machine before such interventions or who fails to take the necessary precautions when the safety devices provided by the manufacturer are excluded.
  - Any modification or addition that alters the functioning, as described in the technical data sheet/plate supplied with the machine.
  - Use of non-original spare parts.
  - Installation or storage into an environment that does not comply with the manufacturer's instructions.
  - Improper use of the machine other than that indicated in the machine documentation (e.g. functioning, type or size of dishes different from those specified, etc.).
  - Using of dry dispensers or with low quality, corrosive and impure chemicals.
  - Poor or total absence of maintenance of all parts subject to wear.
  - Cleaning of the parts subject to daily use of the appliance.



## 1B – TRANSPORT

- Any handling of the machine must be carried out using suitable equipment: forklift or pallet truck (these must exceed half the size of the product), as well as suitable safety devices, gloves and clothing.
- The manufacturer does not assume any responsibility for damage to the product, to people or things caused by failure to comply with the transport instructions of this appliance.



## 1C – INSTALLER

- **The installation must be carried out by specialized and qualified personnel, respecting the following instructions.**
- The personnel responsible of the installation and electrical connection are required to instruct the user on the complete functioning of the system and the safety measures to be implemented. He must also give practical demonstrations of how to use it and make sure he has in his possession of the instructions attached to the appliance. It must issue a written declaration regarding correct installation and testing according to regulations and workmanlike standards.
- Make sure the machine is level by screwing and adjusting with supplied feet.
- The undercounter and pass-through dishwasher models must be fixed to the floor with brackets, by using the bushings underneath (brackets not supplied) (see **par. 2B**).
- The machine **must not** be installed in environments with danger of flammable substances and explosive atmospheres, heat sources above 50°C or outdoors without adequate shelter or exposed to atmospheric agents (rain, sun, etc.).
- The washing pump motor is equipped with a thermal limiter which stops operation at 160°C and prevents it from overheating.
- Contact with electrical parts is not permitted without the aid of specific safety tools.



## 1D – HYDRAULIC CONNECTION

- Use the original inlet water connection hose supplied with the machine.
- Verify the presence of the gasket inside the hose connection, in excellent condition and free from breakages or signs of wear.



## 1E – ELECTRICAL CONNECTION

**DANGER: read the manual carefully before connecting electrically the machine to avoid any risk of injuries.**

- It must be positioned on the power line and close to the installed appliance.
- Must only serve a single machine.
- The use of adapters, multiple sockets and cables of inadequate cross-section or with extension joints of any type must be absolutely prohibited.
- Replacing of the power cable must be carried out by qualified technical personnel and satisfy the technical requirements indicated on the machine's identification data plate.
- The power cord must comply with the safety standard of the geographical area where the appliance is installed.
- **For safety reasons and correct earthing system the machine must be connected to the adjacent metal structure or its equipotential (see par.2G).**



## 1F – USER

- The manufacturer does not assume any responsibility for damage to people or things caused by improper or incorrect use of the machine.
- **DO NOT** use the machine to wash objects of a type, shape, size or material that are not guaranteed for washing machine or not perfectly intact.
- **DO NOT** open the machine door quickly until the end of the wash cycle, to avoid direct contact with the hot water.
- **DO NOT** start the wash cycle without the overflow in position and supplied with the machine.
- **DO NOT** use the machine or its parts as a support, ladder for people, things or animals.
- **DO NOT** overload the machine door (max 20kg), loading is from the front for rack dishes only.
- **DO NOT** dip your bare hands into the washing solution.
- Only use specific detergents and rinse aids for professional dishwashers, store them in a dry place and out of the reach of children.
- In case of malfunction or leakage of liquids from the machine, disconnect the appliance electrically and close the water supply. Contact customer service immediately.
- Before carrying out any cleaning or maintenance operation, disconnect the appliance electrically.
- The machine must **NOT** remain switched ON, connected electrically and hydraulically when not in use.
- **DO NOT** turn the machine upside down after installation.
- The appliance must **NOT** be exposed to sources of heat or humidity.
- **DO NOT** bring magnetic objects close to the machine.
- **DO NOT** use the machine if the power cord is damaged.
- **DO NOT** close the main water tap while the machine is operating.
- **DO NOT** electrically disconnect the machine by pulling the power cord, pull out the plug.
- **DO NOT** remove protections or panels that require the use of specific tools.
- The machine is equipped with a safety device which stops the machine if the door is opened during the wash cycle.
- **This machine cannot be used by children any age below 18 years old, by people with reduced physical, sensory or mental capabilities. Each person involved to the use of the machine must be trained and knowledge by qualified personnel and aware of the safe and risk of use.**



## 1G – CLEANING / MAINTENANCE

- Cleaning and maintenance of the machine should not be performed by untrained users.
- Avoid to wash the machine with a direct, high-pressure jet of water or steam, products containing chlorine or acids or metals, iron sponges.



Please read this manual carefully as it provides important information on safe installation, use and maintenance. Please keep this manual properly for further consultation with each operator.



#### CAUTION!

→ Installation must be carried out exclusively by qualified and authorized technicians.



#### 2A – TRANSPORT

Any movement of the machine must be carried out using suitable equipment: transport trolley, forklift or pallet truck (these must exceed half the size of the product).



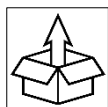
#### CAUTION!

→ The use of the machine and operating procedures that are not suitable for loading, unloading and handling can cause injuries to the user and/or to the machine.

→ Handling must be in compliance with the regulations of the country on method of loading, unloading and handling where the machine is used.

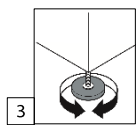
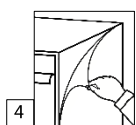
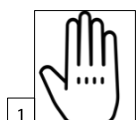
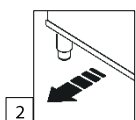
→ The manufacturer does not have any responsibility for damage to things and/or people with improper use of the machine or from the implementation of non-compliant and/or unsuitable procedures of loading, unloading and handling of the machine.

#### 2B – UNPACKING / POSITIONING

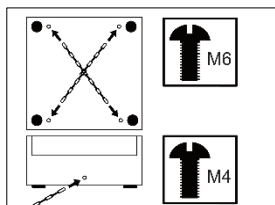


Before unpacking, check if any damage found, in case report it to the forwarder immediately. After unpacking, check if any damage found with the product, in case contact the dealer.

→ If any serious damage which compromises the safety of the machine, do not proceed with the installation until a qualified technician has intervened. All packaging material (plastic bags, nails, etc.) must not be left out of the reach of children as they are a potential source of danger and disposed by following the procedure in the country where the appliance is installed.



1. Always use protective gloves when handling and removing the packaging.
2. Move the first part of the machine from the pallet to the surface of the floor, paying attention to the weight and precarious balance of the machine.
3. Install the supplied feet and complete the translation of the machine.
  - Position and level the machine by screwing the adjustable feet.
4. Remove the protective film from the machine.



Pass through models without tables must be secured to the floor by using stainless steel ring chains, fixed in the holes of the external bottom frame with M6 screw.

Chain dimensions: ring diameter 4 mm / ring internal width 7 mm / chain length 250 mm (bottom view of the hood frame).

Undercounter models not installed under the counter must be secured to the floor by using stainless steel ring chain, fixed in the hole in the rear part of the base with M4 screw.

Chain dimensions: ring diameter 4 mm / ring internal width 5 mm / chain length 100 mm (rear view of undercounter base).

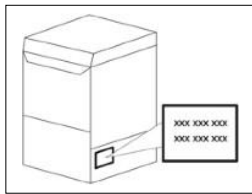
## 2C – TECHNICAL FEATURES

HYDRAULIC SUPPLY		
Temperature	°C	50
	°F	122
Pressure	kPA	200 - 400
	Bar	2 - 4
	PSI	30 - 60
Hardness	°f	7 - 14
	°dH	4 - 7,5
	°e	5 - 9,5
	ppm	70 - 140
Residual Minerals	mg/l	300 / 400
Conductivity	µS/cm	300 / 400
POWER SUPPLY		
Voltage	V	SEE DATA PLATE
Power	W	
Frequency	Hz	
Voltage Tolerance	V	
Frequency Tolerance	Hz	± 1 %
INSTALLATION ENVIRONMENT		
Operating Temperature	°C	5 - 35
	°F	41 - 95
Warehouse temperature	°C	10 - 70
	°F	50 - 158
OPERATION DATA		
H2O consumption (*)	l/cycle	1,5 ÷ 3,3
Noise	dB(A)	< 70
(*) water consumption varies based on the model and network pressure.		

### 2C1 - NOISE LEVEL

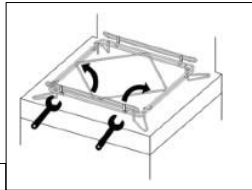
The environmental noise must not exceed the values established by the regulations in force where the machine is installed. Test done with the machine has registered less than 70 dB of noise.

**It is always necessary to refer the values listed below and respect, understand or take them into consideration during storage, transport, use and maintenance of the machine.**



## 2D – DATA PLATE

The data plate describes important technical characteristics and identification of the machine. It is positioned on the side of the machine. In case of malfunctions, it is mandatory to communicate the **serial number** to the service assistance.



## 2E – FRONT LOADING RACK SUPPORT INSTALLATION

(pass through models)

Direction of the loading rack can be configured based on the position of the installed machine. Machine positioned on the corner requires front loading rack.

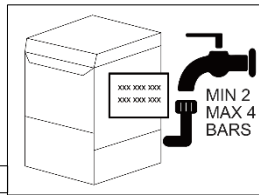
1. Remove the rack support grid and reposition right or left side with the screw.

1

## 2F – HYDRAULIC CONNECTION / WATER DRAINING

It is mandatory to have a single dedicated water supply tap for the machine.

2. Connect the inlet water tube positioned on the back of the machine to the water supply tap.



### 2F1 - NETWORK PRESSURE

**IMPORTANT:** to reach good washing results the inlet water pressure must satisfy the values indicated on the technical features (see par.2C). The required pressure range is **MIN 30 - MAX 60 PSI**.

3. Verify the water inlet pressure to the machine (see par.2C).
  - If the pressure value is higher, install a pressure reducer.
  - If the pressure value is lower, install an external pressure booster pump.
  - New or out of use hydraulic plants, before connecting the machine run the water completely to clean out impurities, air bubbles and anything else that could stain or damage the machine.

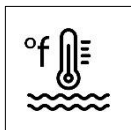
2-3



### 2F2 - WATER HARDNESS

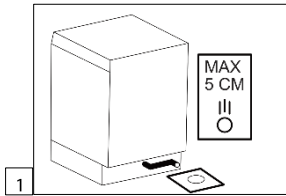
**IMPORTANT:** to reach good washing results the water hardness must satisfy the values indicated on the technical features (see par.2C).

Verify the water with apposite tool for water hardness.



- If the water hardness value is higher (see par.2C) and the machine is not equipped with an internal water softener, we recommend to install an external softener before the inlet valve.
- If the water has a high concentration of residual minerals or high conductivity, we recommend installing a specific filter to demineralize and calibrated residual hardness to 5/7 °f.
- If the machine is equipped with built-in water softener, the installer must communicate to the user the regeneration cycle frequency.

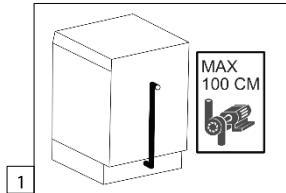
### 2F3 - MODELS WITHOUT DRAIN PUMP



**IMPORTANT:** to avoid any water leaking outside of the machine and have a correct water level inside the tank with an efficient draining, the outlet tube positioned on the back of the machine must be installed on the floor drainage, free from forcing, impediments, knots, folds or curvatures and in case max 5 cm from the floor.

1. Connect the outlet tube to the floor drainage including a siphon. Alternatively, place the outlet tube over a siphoid drain installed from the floor.

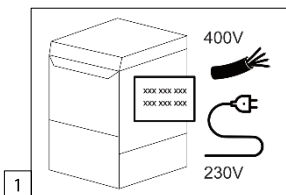
### 2F4 - MODELS WITH DRAIN PUMP (optional)



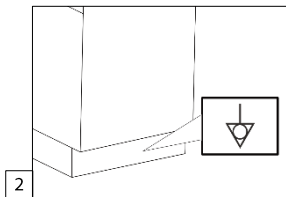
**IMPORTANT:** to avoid any water leaking outside of the machine and have a correct water level inside the tank with an efficient draining, the outlet tube positioned on the back of the machine must be free from forcing, impediments, knots, folds. The machine drains out the water with the drain pump installed. The outlet tube cannot be positioned higher than overall height of the machine.

1. Connect the outlet tube to the main drainage including a siphon.

### 2G – ELECTRICAL CONNECTION



1. Check the electrical characteristics indicated on the data plate of the machine (see par.2D).
2. Make sure there is a switch dedicated to the machine, there is an effective earthing system and connected to the equipotential.
3. Install the power cable free from pulled, strained, bent, pinched or mashed. Use only original power cable spare part in case of replacement.



On the rear part of the machine it is installed a terminal marked with the symbols necessary for the equipotential connection between the different devices. The equipotential terminals fixed on the fuselage must be connected using wires with a cross section of 2.5~10 mm as specified.



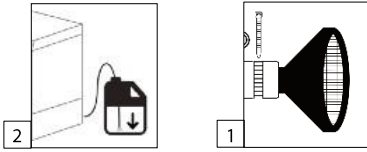
**IF THE MACHINE IS EQUIPPED WITH THREE-PHASE WASH PUMP, check the correct rotation of the impeller. This is indicated by the arrow positioned on the cover. If the rotation is in the opposite direction, invert the L1 and L2 lines.**

## 2H – PREPARATION / CHEMICAL DISPENSER SETTING

### CAUTION!



→ **IMPORTANT: do not reverse the rinse aid and detergent tubes. This operation causes damage to the dispensers and the immediate loss of the warranty of the machine.**



1. Install the filter on the rinse aid and detergent tubes (if available) tightening the band.
2. Insert the rinse aid and detergent tubes (if available) into the bin.
3. Check with chemical product until is completely filled through the transparent tube. To reach the correct level you must run multiple cycles.

### 2H1 - RINSE AID / DETERGENT DISPENSER WITH MANUAL SETTING

Correct quantity of chemical product must be adjusted considering the water hardness and the type of chemical used.

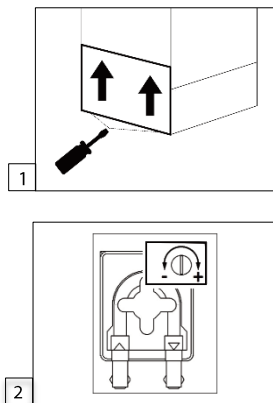
Maximum flow rate default setting:

**Rinse aid 0.2 ml/s – Detergent 0.85 ml/s**

### CAUTION!



→ **IMPORTANT: Before proceeding with the removal and repositioning of the panel disconnect the machine electrically.**



1. Remove the front panel with the screws and push slightly upwards.
2. Adjust the quantity of the chemical on the dispenser with the screw:
  - **Anticlockwise** reduces the quantity up to zero level.
  - **Clockwise** increase the quantity up to maximum level.
3. Run multiple cycles to reach the correct chemical quantity.



#### CAUTION!

- All machines are ready to fit post install external dispensers kit.
- Replacement of the detergent or rinse aid dispenser must be made with empty and cleaned tube before inserting them into the bin. Incorrect operation of the maintenance and replacement of the dispenser can cause immediate damage and loss of the warranty of the machine.
- Avoid dry tubes of the dispenser to prevent quick deterioration or breaking.
- The quality and quantity of the chemical product used with the machine are important to reach good washing results and preserve the life of all parts.
- Use of corrosive or polluting chemical products contaminate the environment, damage the machine and immediate loss of the warranty.

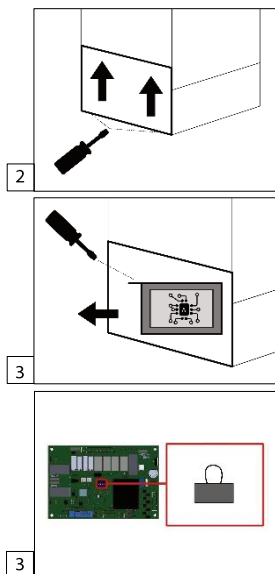
## 2L – THERMO STOP ACTIVATION

This function guarantees high temperature on final rinsing of the dishes (min. 82°C/180°F).



#### CAUTION!

- Activation must be carried out by qualified and authorized technicians only where it is required by the health regulations in force and/or upon request by the user.
- Before proceeding with activation of the THERMO STOP function, disconnect the machine electrically.



1. Disconnect the machine electrically.
2. Remove the front panel with the screws and push slightly upwards.
3. Remove the pcb box positioned inside the component area.
  - **Mechanical control button models:** insert the connector directly on the pcb board (not included).
4. Reposition the PCB box and reposition the front panel with the screws.

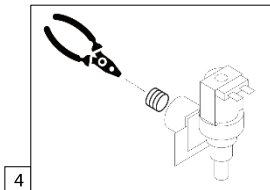
## 2M – MAINTENANCE

Every 3-6 months a periodic check to all parts subject to wear must be done to guarantee correct functioning of the machine.



### CAUTION!

- Before starting any maintenance operation or spare part replacement, disconnect the machine electrically and hydraulically.
- Poor or insufficient periodic maintenance can lead to premature damage of the machine and increase safety risk to people and things. Failure to maintenance operations will cause immediate loss of the warranty.
- Maintenance and/or replacement of each part must be carried out only with original spare parts. Check the serial number of the machine (see par.2D) to order correct spare parts. Failure on this will cause immediate loss of the warranty.
- If the machine was running, wait 20 min or until the hot temperature of the parts are cooled down before starting maintenance operations and/or spare part replacement, to avoid risk of injuries in contact with hot water.



1. Use specific product for stainless steel to descale the boiler, the tank, pipes, internal parts of the machine.
2. Use specific product for stainless steel or plastic to descale the washing arms, rinse jets and wash jets. If necessary, remove the wash arm parts (see par.3E3).
3. Check the suction and internal pipes of the automatic dispenser. In case of slight signs of deterioration, replace the parts immediately (duration period 6- 12 months).
4. Clean the filter inside the solenoid valve by removing the inlet tube. The internal filter must be extracted with pliers tool.
5. Check the condition of the filters inside the tank. In case of signs of deterioration, replace the parts immediately.
6. Check the condition of the heating element inside the tank and the boiler, if covered with limestone use a specific product to clean it off or replace it.
7. Check the general condition of the components, electrical wiring and power cable. In case of slight signs of deterioration, replace the parts immediately.
8. Check the condition of the inlet and outlet water tubes. In case of slight signs of deterioration, replace the parts immediately.
9. Check the condition of the hydraulic hoses and the tightness of the clamps. In case of slight signs of deterioration, replace the parts immediately.
10. Check the position and condition of the temperature probes. In case of slight signs of deterioration, replace the parts immediately.
11. Check the electrical connections such as terminals, fastons, terminal blocks, etc., of the main electrical wiring. In case of slight signs of deterioration, replace the parts immediately.

## 2N – UNINSTALLATION (long period of inactivity)



### CAUTION!

→ Failure of incorrect uninstallation procedure can lead to premature damage of the machine and increase safety risk to people and things. This failure will result in immediate loss of the warranty.

1. Drain out the water from the tank completely 3C6/7).
2. Disconnect hydraulically and electrically the machine from the inlet, outlet tubes and the electrical power cable (see par.2F-2G).
3. Start cleaning operations of the machine (see par. 3D).
4. Empty the dispenser tubes and remove them from the bin. Clean them first with fresh water, then with water and glycerin solution (50% - 50%). Keep them clean and lubricated.
5. Empty the water from the boiler by removing the screw underneath and wait few minutes until it is completely empty. **IMPORTANT:** if the machine was ON, wait at least 20 min before unscrew to avoid hot water contact.
6. Treat and protect all steel surfaces with a small amount of vaseline oil.

### NOTES BY THE INSTALLER

DATE OF INSTALLATION: \_\_\_\_\_

PLACE: \_\_\_\_\_

COMPANY: \_\_\_\_\_

SERIAL NUMBER: \_\_\_\_\_

STAMP AND SIGNATURE: \_\_\_\_\_



### 3A – GENERAL WARNINGS / WARRANTY

#### CAUTION!

- Read the manual instructions carefully as it provides important information on the safe use and maintenance of the machine. Failure to comply with the provided instructions may cause serious or fatal injuries to people, compromise the safety of the machine and immediate loss of the warranty.
- This manual must be legible, undamaged and stored near the place of use for quick access. In case of loss or damage, request a copy from your dealer or if available download this online.
- The machine is designed specifically for professional dishwashing with hot water and professional chemical products. It cannot be used for other purposes or applications.
- DO NOT open the door of the machine quickly and until the end of the wash cycle, to avoid any contact with the hot water.
- DO NOT immerse your bare hands in the washing solution.
- DO NOT overload the door (max 20kg) of the machine. Rack with dishes must be loaded from the front side of the machine.
- DO NOT use the machine to wash any object with shape, size or material that are not intended for dishwasher machine and perfectly intact.
- DO NOT start the wash cycle without the overflow pipe in position and supplied with the machine.
- DO NOT use the machine as a support or ladder, for people, things or animals.
- DO NOT keep the machine ON, connected electrically and hydraulically if not in use.
- Use specific detergent and rinse aid for professional dishwashers only. Store them in a dry place and out of reach of children.
- In case of malfunction or leakage of liquids, disconnect immediately the machine from the main electrical and water supply. Contact customer service immediately.
- The warranty covers the product and all its defective parts or malfunctions with the exception of all parts subject to wear such as: chemical dispensers, drain pump, washing pump and all electrical components.
- The warranty does not cover incorrect or altered use of the machine and modifications, failure to maintenance or replacements with non-original parts.

### 3A1 - BEFORE STARTING A WASH CYCLE

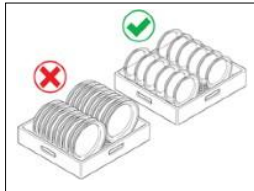
#### CAUTION!



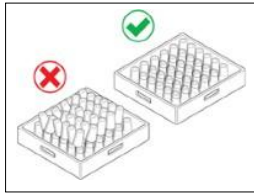
1. DO NOT insert delicate and decorated dishes inside the machine.
2. DO NOT wash dishes made of precious materials such as silver, copper, etc.
3. Avoid long period drying of solid dirt residues on the dishes. Remove dirt residues with prewashing before inserting the dishes into the machine to avoid clogging of the filters into the tank.
4. Pre-treat the dishes with cold or light warm water, without any use of detergent.
5. Use professional high quality, foaming and corrosive free rinse aid and detergent only.
6. Models without detergent dispenser, manually add the amount of chemical only when the machine has reached the correct temperature. Quantity must be provided from the chemical supplier.

### 3A2 - RACK LOADING

1. Insert the plates on the supplied rack, facing frontally and with adequate distance.



2. Insert the glasses or cups on the supplied rack, facing downwards and with adequate distance without overlapping.

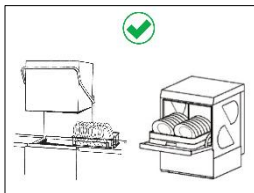


3. Insert the cutleries vertically on the supplied container with downwards handle.

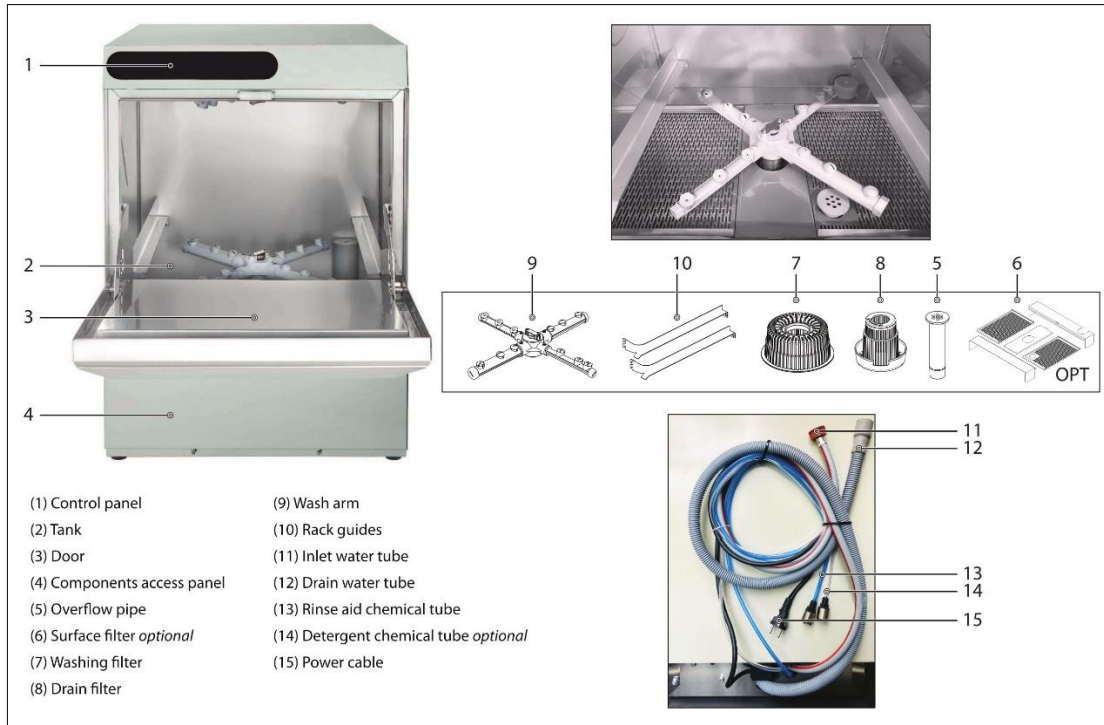


4. Insert the rack with dishes inside the machine:

- **Undercounter models:** front loading.
- **Pass through models:** front or side loading.



### 3B – PRODUCT DESCRIPTION

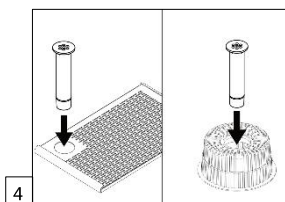
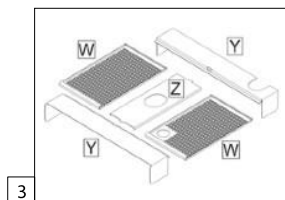
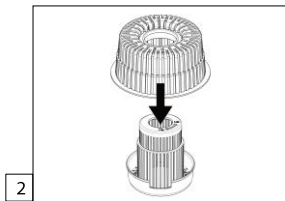
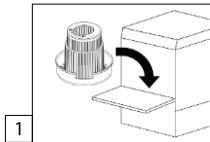
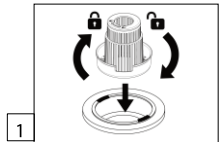


The product description above is the most complete version. Some versions may not have all the options listed.

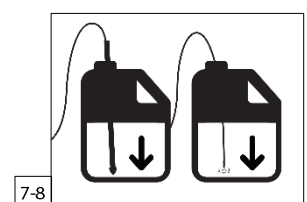
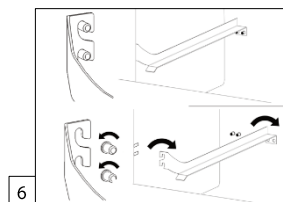
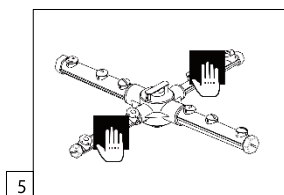
### 3B1 - PARTS POSITIONING



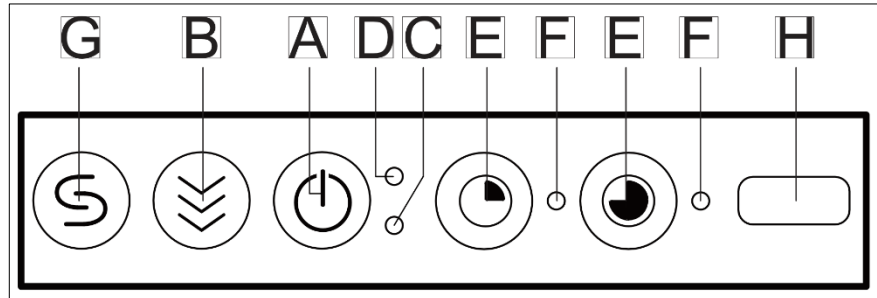
All machines are equipped with removable parts suitable for operation and daily maintenance: **overflow pipe (5), washing filter (6), surface filter (7), drain filter (8), washing arm (9), rack support guide (10), chemical tube (13-14).**



- Position the drain filter (8) inside the drain hole of the tank and lock it rotating clockwise or anticlockwise.
- Position the washing filter (7) over the drain filter (8) pressing on the upper part until complete engagement.
- Position the surface filter (6) *optional* inside the tank positioning before support Y horizontal and Z vertical. Place filter W into the space available.
- Position the overflow pipe (5) inside the drain filter (8) and inside the drain hole of the tank, pressing firmly all the way down into the position.
- Position the upper and lower wash arms (9) on the threaded pin inside the tank and screw to secure them.
- Position the rack guides (10) starting from rear to front pins rotating in the coupling direction.
- Position rinse aid (13) and detergent (14) *optional* tubes into the specific bin. The filter must be secured with the supplied band, free from obstructions and reach the bottom of the bin.
- Position rinse aid and detergent level sensor *optional* inside each bin. Connect them to the dosing pump with wires.

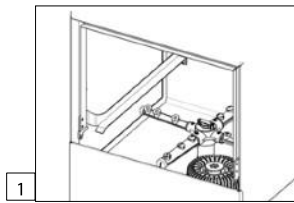


### 3C – START OF THE MACHINE / WASH CYCLE (mechanical control button)

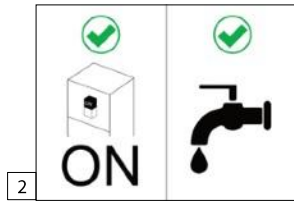


The interface shown above is the most complete version. Some versions may not have all the options listed, and the display may have different functions.

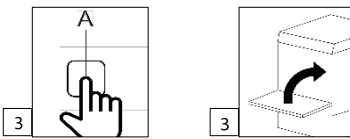
#### 3C1 - STARTING / WATER FILL AND HEAT



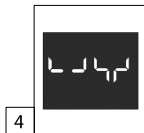
1. Open the door and check correct position of all components (see par.3B1): **rack support guides, filters, overflow pipe, washing arms and external dosing tubes.**



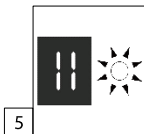
2. Open the water tap and turn ON the main switch of the machine.



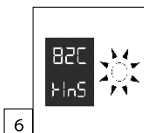
3. Close the door and press button "A" to turn ON the machine.



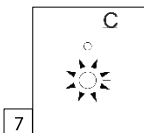
4. During filling water phase the display *optional* shows filling message.



5. If the door is opened during filling phase, this function is interrupted and the LED "F" flashes. The display *optional* shows door closing message.



6. At the end of water filling phase, heating phase begins and the display (optional) shows washing (tank) and rinsing (boiler) temperatures.

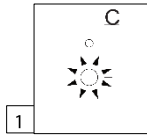


7. At the end of the heating phase, the LED "C" is green. At this stage the water into the boiler is on temperature, while the water into the tank is still heating and may need more time to reach the optimal temperature.  
**TIP:** to reach good washing results, after the LED "C" is green, wait until the tank temperature is reached (70°C/158°F) before starting the first wash cycle.

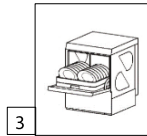
### 3C2 - START OF THE WASH CYCLE (undercounter models)



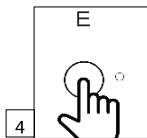
The wash cycle includes washing phase with hot water and detergent (recycling water), rinsing phase with hot water and rinse aid (fresh water).



1. Wait until the LED "C" is on green before opening the door.



2. Model without detergent dispenser: open the door and insert the chemical quantity inside the tank. Quantity must be provided from the chemical supplier.

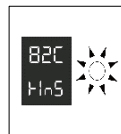


4. Select and press one of the available wash cycles with button "E":

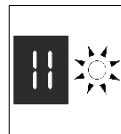
- **Short cycle: light dirty dishes.**
- **Medium cycle: medium dirty dishes.**



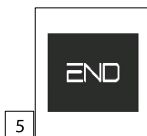
• During washing phase, the display *optional* shows alternately the temperature/wash message, and the LED "F" is blue until the end of the cycle.



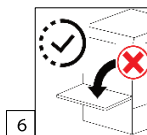
• During rinsing phase, the display *optional* shows alternately the temperature/rinse message, and the LED "F" is blue until the end of the cycle.



• If the door is opened during washing cycle, this function is interrupted and the LED "F" flashes blue. The display *optional* shows closing door message. If the door is opened for 10 secs, the wash cycle is interrupted permanently.



5. At the end of the wash cycle the LED "F" is OFF and the display *optional* shows end message.



6. **CAUTION:** wait at least 15 seconds before opening the door to prevent direct contact with hot steam present inside the machine.

7. Remove the rack with washed dishes and close the door immediately, to save energy and reduce recovery time for the next wash cycle.

### 3C3 - START OF THE AUTOMATIC WASH CYCLE (door type models)



Door type models have automatic wash cycle starting with the hood closed.

1. Wait until the LED "C" is green before opening the hood.
2. Open the hood using the handle. **CAUTION:** the handle can slide upwards quickly, maintain it firmly with grip.
3. Model without detergent dispenser: insert the detergent inside the tank. Quantity must be provided from the chemical supplier.
4. Select and press one of the wash cycles available with button "E":
  - **Short cycle: light dirty dishes.**
  - **Long cycle: medium dirty dishes.**

5. Insert the rack with washing dishes on the rack support and close the hood.
  - During washing phase, the display *optional* shows alternately the temperature/wash message, and the LED "F" is blue until the end of the cycle.
  - During rinsing phase, the display *optional* shows alternately the temperature/rinse message, and the LED "F" is blue until the end of the cycle.
  - If the hood is opened during washing cycle, this function is interrupted and the LED "F" flashes blue. The display *optional* shows closing hood message. If the hood is opened for 10 secs, the wash cycle is interrupted permanently.

6. At the end of the wash cycle the LED "F" is OFF and the display *optional* shows end message.
7. **CAUTION:** wait at least 15 seconds before opening the hood to prevent direct contact with hot steam present inside the machine.

8. Remove the rack with washed dishes and proceed with one of the following solutions:
  - 8A. **Continue washing.** Insert another rack with washing dishes and close the hood to start a new automatic wash cycle starting.
  - 8B. **Finish washing.** Before closing the hood press button "E" to deactivate the automatic wash cycle starting. Close the hood.

### 3C4 - THERMO STOP FUNCTION

This function guarantees high temperature final rinsing min 82°C before the end of the wash cycle.

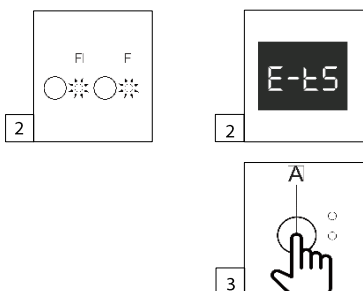
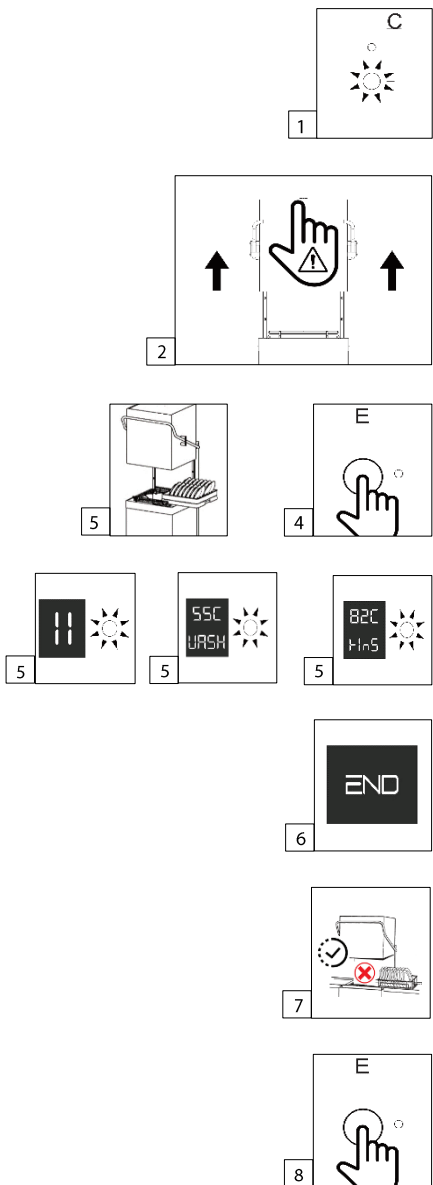
When the THERMO STOP function is active the duration of the wash cycle is longer, if the wash cycle have not started with green LED light.



#### CAUTION!

→ This function must be activated by qualified and authorized technicians (see par.2M) only.

1. During washing phase the display (optional) shows active function message.
2. After 8 minutes of washing, if rinsing temperature has not reached, the wash cycle is interrupted and the LED "F" flashes rapidly. The display *optional* shows the error message at the end of the wash cycle.
3. To remove the error message and reset the function, turn OFF the machine for 15 seconds pressing button "A".



### 3C5 - REGENERATION FUNCTION (models with water softener)

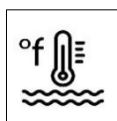


The water softener function reduces the hardness and limestone of the water used for washing through the use of special resins that eliminate heavy minerals. Total time of a regeneration cycle is approximately 20 minutes.

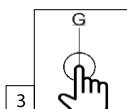
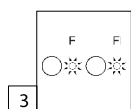
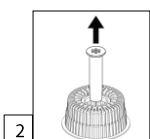
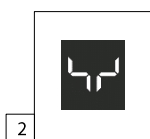
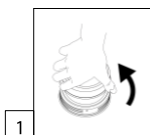
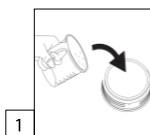


#### CAUTION!

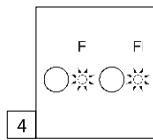
- DO NOT open the door when the wash cycle is running and/or during the regeneration cycle.
  - DO NOT turn OFF the machine during the regeneration cycle. If done accidentally, immediately turn the machine back on and repeat the regeneration cycle procedure.
  - In case of emergency, interrupt the regeneration cycle by turning off the machine.
  - The salt container must be refilled with specific dishwasher salt only without adding other type of chemical products such as detergent, rinse aid or similar.
  - Salt residues on the tank can cause corrosive damage to the machine. If salt leakage while refilling the salt container, **immediately remove and clean out the salt residues.**
  - Failure to follow a correct regeneration procedure can lead to premature damage to the machine and increase safety risk to people and things. Failure to comply with these instructions causes immediate loss of the warranty.
- The regeneration cycle must be done regularly to guarantee good washing results. The number of cycles necessary depend on the hardness of the water and the number of wash cycles performed.
  - We suggest starting a new regeneration cycle at the beginning of the day or each time the display shows the regeneration cycle message.
  - The water softener cycle must be done with the presence of salt inside the container, which must be checked and refilled regularly.
  - Recommended regeneration cycles are shown on the table below. **IMPORTANT: ask the installer the water hardness value detected.**



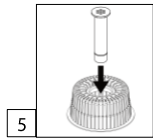
	Glass washer			Dishwasher		
Water hardness	20°f	30°f	40°f	20°f	30°f	40°f
Liters of water	120	75	60	240	150	120
Regeneration cycles	60	35	30	120	75	60



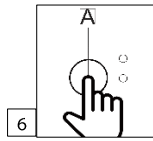
1. Add the salt inside the container positioned inside the tank unscrewing the cap and avoiding salt leakage. Immediately remove salt residues inside the machine to prevent corrosive damage.
1. Open the door, remove the overflow pipe inside the tank and close the door.
  - **Models without drain pump:** wait until the end of water draining phase.
  - **Models with drain pump:** press button "B" for 3 secs and wait until the end of water draining phase.
2. Press button "G" for 3 secs to start the regeneration cycle.
  - The LED "F" blue flashes quickly and the display *optional* shows the remaining time of the regeneration cycle.



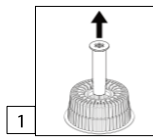
3. At the end of the regeneration cycle LED "F" blue is OFF and the display *optional* is OFF.



4. Open the door and position the overflow pipe inside the drain hole of the tank.



5. Press button "A" to turn ON the machine and start a new wash cycle (see par.3C2/3C3).



### 3C6 - MACHINE TURN OFF / WATER DRAINING (models without drain pump)

1. Open the door and remove the overflow pipe only. Filters must be left in position.

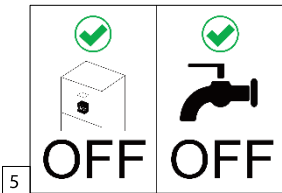
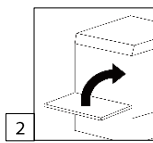
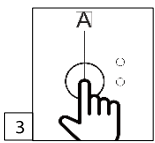
2. Close the door and wait until water is completely empty inside the tank.

- During draining phase a self-cleaning cycle is performed to clean the tank (only if the door is closed).
- During draining phase the display *optional* shows the drain function message.

3. Press button "A" to turn OFF the machine.

4. Leave the door open overnight to prevent presence of odors.

5. Close the water tap and turn OFF the main switch where the machine is connected.



### 3C7 - MACHINE TURN OFF / WATER DRAINING (models with drain pump)

1. Open the door and remove the overflow pipe only. Filters must be left in position.

2. Close the door and press button "B" for 3 secs to start draining phase.

3. Wait until water is completely empty inside the tank.

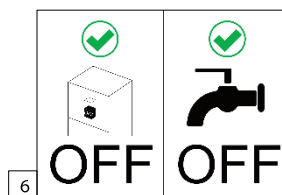
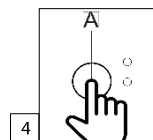
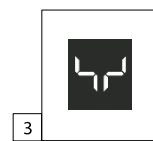
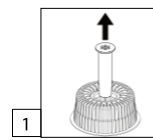
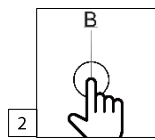
During draining phase a self-cleaning cycle is performed to clean the tank (only if the door is closed).

During draining phase the display *optional* shows the drain function message.

4. Press button "A" to turn OFF the machine.

5. Open the door and leave it open overnight to prevent presence of odors.

6. Close the water tap and turn OFF the main switch where the machine is connected.



## 3D – CLEANING / MAINTENANCE



To perform excellent washing results and extend lifetime of the machine, the water inside the tank must be replaced completely at least twice a day. All removable parts must be cleaned daily.

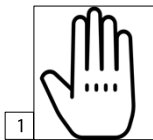


### CAUTION!

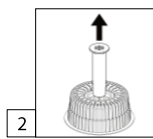
- Cleaning and maintenance must be done from the operator only following these instructions or communicated from qualified personnel.
- Poor or insufficient periodic maintenance can lead to premature damage of the machine compromise the safety of people, things and immediate loss of the warranty.
- Use of gloves and protective equipment is mandatory.
- Before starting any maintenance operation, turn OFF and disconnect the machine electrically from its dedicated switch.
- If the machine was running, wait at least 20 minutes or until the hot temperature of the parts are cooled down, to prevent any risk of injury in contact with hot temperature.
- DO NOT use direct and high-pressure water washing jets, products containing chlorine or acids, metal sponges.
- DO NOT use solvents or aggressive products on the control panel.
- DO NOT use abrasive cleaners, brushes or common steel scrapers. To clean stainless steel surfaces use warm soapy water. Use specific and professional products only. Unsuitable products might cause corrosive damage to the machine.
- To reduce pollution impact into the environment, it is recommended to use products with min 90% of biodegradability for external and internal cleaning only.

### 3D1 - TANK FILTERS / OVERFLOW PIPE CLEANING (every day)

1. Use protective gloves before removing and cleaning all parts.

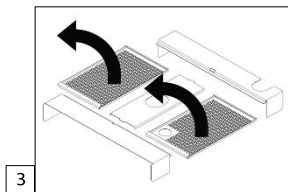


2. Open the door and remove the overflow pipe only. Filters must be kept into position. Drain all water out from the tank and turn OFF the machine as follows:

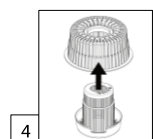


- Mechanical control button version see **par.3C6 – 3C7**.

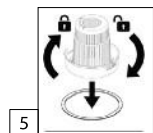
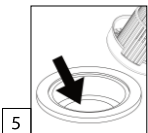
3. Remove the surface filter (6) *optional* positioned inside the tank, paying attention the dirt residues do not fall into the tank (see **par.3B1**).

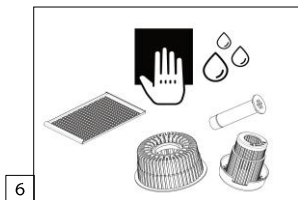


4. Remove the washing filter (7) positioned inside the tank.

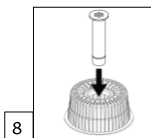


5. Remove the drain filter (8) positioned inside the tank rotating clockwise or anticlockwise until unlock position (see **par.3B1**). Paying attention the dirt residues do not fall into the drain hole.





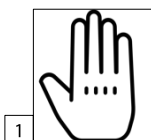
6. Clean all filters and the overflow pipe with fresh water and/or a clean cloth, taking care on the surface and openings free from possible dirt residues.



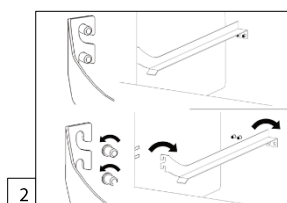
7. Check for any dirt residues inside the drain hole. If necessary, remove them with a clean cloth or a small spoon.

8. Reposition all parts inside the tank (see **par.3B1**).

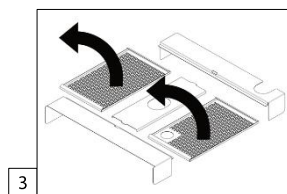
### 3D2 - TANK / DOOR CLEANING (every day)



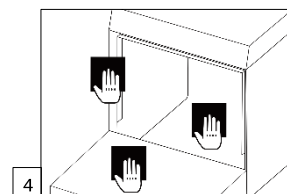
1. Wear protective gloves before cleaning the parts.



2. Open the door and remove the rack support guides (10) rotating until unlock position (see **par.3B1**).



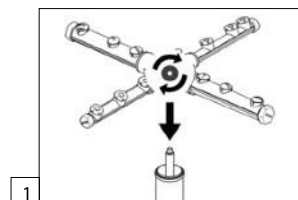
3. Remove all filters inside the tank (see **par.3B1**). Remove any dirt residues on the surface and corners of the tank with a clean cloth.



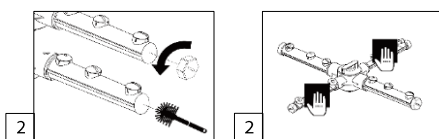
4. Remove any dirt residues on the surface, corners and drainage channels of the door with a clean cloth.

5. Reposition all parts inside the tank (see **par.3B1**).

### 3D3 - WASH ARMS CLEANING (every day)



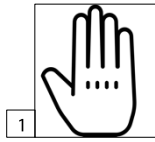
1. Remove the wash arms unscrewing the central nut.



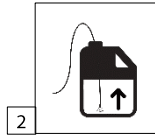
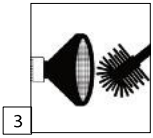
2. Clean the wash arms and nozzles with fresh water and a clean cloth. Remove dirt residues and any obstructions. If necessary unscrew the external caps and proceed with pipe cleaner into the nozzles.

3. Reposition all parts inside the tank (see **par.3B1**).

### 3D4 - RINSE AID / DETERGENT FILTER CLEANING (every week)



1. Use protective gloves to remove and clean the tube dosing filter.

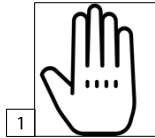
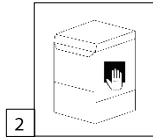


2. Remove the filter hose positioned inside the bin paying attention of possible leakage from chemical product.

3. Remove the dirt residues from surface filter.

4. Reposition all parts inside the bin (see par.3B1).

### 3D5 - EXTERNAL SURFACES CLEANING (every week)



1. Use protective gloves to clean the external parts of the machine.

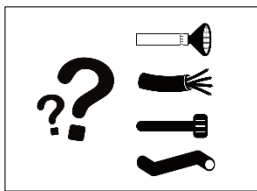
2. Use a clean cloth specific for stainless steel surfaces only with warm soapy water.

### 3D6 - HOSES / POWER CABLE VERIFICATION (every 3 months)

#### CAUTION!



→ **DO NOT use the machine if parts are worn or damaged. If any, turn OFF the main power supply immediately. Call the technical service.**



1. Check the rinse aid and detergent dispenser tubes *optional* if signs of wear (dry) or damaged (leaking). If any, call the technical service.

2. Check the electrical power cable with signs of wear or damaged. If any, call the technical service.








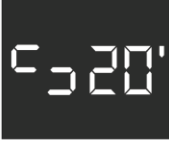


3. Check the inlet and outlet water hoses if signs of wear or damage (leaking). If any, call the technical service.



**CAUTION!**

- Messages are not displayed if the machine is OFF. Turn ON the machine to read the message.
- The boiler and the tank heating are interrupted. All loads are switched off. The pcb board displays an error code and becomes unusable. All LED controls are OFF. Any started wash cycle is interrupted until the error code is reset. It is always possible to turn OFF the machine with the ON/OFF button, in this case the error code displayed is cancelled.
- All machines are equipped with a safety thermostat which cuts off the heating elements in case of overheating. To reset the safety thermostat, call the technical service.
- In case of incomprehensible symbols or symbols other than those listed, turn the machine OFF and ON again.
- Make sure the machine is connected individually to a specific power switch. Make sure the main electrical system is free from electrical disturbances or magnetic fields caused by nearby appliances.
- If the problem persists call the technical service and communicate the serial number of the machine (see par.2D).







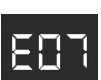
#### 4A – FUNCTION MESSAGE DISPLAY (mechanical control buttons)

DISPLAY	DESCRIPTION	USER
	FILLING WATER TANK	Filling water loading phase active. The overflow pipe must be in position and the door must be closed.
	WASHING TEMPERATURE	Wait until the temperature (default 50-55°C - 122/131°F) is reached before starting a wash cycle.
	RINSE TEMPERATURE	Wait until the temperature (default 82°C/180°F) is reached before starting a wash cycle.
	WASH CYCLE	Washing phase active. Wait until the end of the cycle before opening the door.
	RINSE CYCLE	Rinsing phase active. Wait until the end of the cycle before opening the door.
	END OF CYCLE	Wash cycle finished. Wait 15 seconds before unloading the rack to prevent contact with hot temperature.
	DRAINING WATER TANK	Draining phase active. The overflow pipe should be removed and the door closed.
	REGENERATION	Regeneration cycle required.
	DOOR CLOSING	Door closing required.
	TURN OFF THE MACHINE (models with drain pump only)	Turn OFF the machine when draining phase is completed.

#### 4B –DISPLAY ERROR MESSAGE (electronic control buttons)

DISPLAY	DESCRIPTION	USER	TECHNICAL SERVICE
<b>ntcb</b> E-01	BOOSTER TEMPERATURE PROBE	Call the technical service.	Check the probe connection. Check the probe position and presence of scale.
<b>ntcu</b> E-02	TANK TEMPERATURE PROBE	Call the technical service.	Check the probe connection. Check the probe position and presence of scale.
<b>FILL</b> E-03	WATER FILLING	Check the door closing and the overflow pipe position (see. par.3B1). If the problem persists call the technical service.	Check inlet main water supply is correctly connected, open and free from any obstructions. Check solenoid valve filter is free from any obstructions such as lime or scale. Check inlet water pressure corresponds to the Check the door is closed and the water flow device is correctly positioned.
<b>Tbo</b> E-04	BOOSTER TEMPERATURE LIMIT	Call the technical service.	Check the boiler probe/pcb board connection. Check the probe position and presence of scale. Replace the pcb boards.
<b>TUA</b> E-05	TANK TEMPERATURE LIMIT	Call the technical service.	Check the boiler probe/pcb board connection. Check the probe position and presence of scale. Replace the pcb boards.
<b>drA</b> E-06	DRAIN ANOMALY	Check drain anomaly, water draining not completed during the time limit.	Check water flow device is removed and water drain line is free from any obstructions.
<b>bnot</b> E-07	BOOSTER HEATING	Call the technical service.	Check maximum booster heating time passed the limit. (15min)
<b>unot</b> E-08	TANK HEATING	Call the technical service.	Check Maximum tank heating time passed the limit. (30min)
<b>SeruiCE</b> E-05	PARAMETER ERROR OR ELECTRONIC CARD FAILURE	Call the technical service.	Check if the booster and tank heating elements are interrupted and the water load is deactivated. Check the control panel for error messages and verify if the electronic card is inactive. Check if all LED buttons are OFF and the washing cycle is in standby mode. Check if the problem is solved to restore the washing cycle. Check if the machine can be turned OFF using button "A" (ON/OFF). Check if warning messages disappear once the issue is resolved.

## 4C – DISPLAY ERROR MESSAGES (mechanical control buttons)

DISPLAY	DESCRIZIONE	UTENTE	SERVIZIO TECNICO
	DOOR OPENING DURING SHORT CYCLE	Check that the door is closed	<b>Verify</b> the correct operation of the microport. Replace the pcb board.
	DOOR OPENING DURING LONG CYCLE	Check that the door is closed	<b>Verify</b> the correct operation of the microport. Replace the pcb board.
	DOOR OPENING DURING THE REGENERATION CYCLE	Check that the door is closed	<b>Verify</b> the correct operation of the microport. Replace the pcb board.
	THERMOSTOP ERROR	Maximum wash time reached with extension. Press button "A" to turn OFF the machine and wait 15 sec to remove the error message/reset the function. If the problem persists, call the technical service.	Check the boiler thermostat functioning.
	WATER FILLING TIME EXPIRED MAXIMUM (default 15 min)	Check the door closing and the overflow pipe position (see par.3B1). Press button "C" for 2 sec and restart the filling phase. If the problem persists call the technical service.	Check functioning of the pressure switch. Check functioning of the solenoid valve and if the filter is free from obstructions. Check the main tap and the hydraulic connection are free from obstructions. Check the inlet water pressure (see par.2C) Replace the pcb board.
	WATER DRAINING TIME EXPIRED MAXIMUM (default 2 min)	Check the overflow pipe if removed and the filters free of obstructions.	Check drain line if free from obstructions. Check drain pump/pcb board connection. Replace the pcb board.
	BOILER HEATING TIME REACHED MAXIMUM (default 60 min)	Press button "A" to turn OFF the machine and wait 15 sec to remove the error message/reset functions. If the problem persists, call the technical service.	Check the functioning of the boiler thermostats and boiler safety. Check the functioning of the safety and working relays of the boiler. Check boiler heating element/ pcb board connection. Check the heating element functioning and presence of scale. Replace the pcb board.

**EMERGENCY!**

- **IN CASE OF FIRE USE A POWDER FIRE EXTINGUISHER.**
- **IN CASE OF DANGER ACT PROMPTLY ON THE MAIN ELECTRICAL SWITCH AND THE MAIN HYDRAULIC SUPPLY TAP.**

**THE MACHINE DOES NOT TURN ON?**

1. Check if the main electrical switch is ON where the machine is connected.
2. Check if the machine is plugged with the electrical power cable and without electrical power break.
3. Check if the electrical power cable is damaged.

**THE MACHINE DOES NOT FILL WITH WATER / DOES NOT REACH THE WATER LEVEL INSIDE THE TANK?**

1. Check if the water supply tap is open or not clogged.
2. Check if the overflow pipe is correctly positioned and not damaged (see par.3B).
3. Check if the door/hood is closed correctly.
4. Check if the regeneration phase (water softener models) has not started.
5. Check if the solenoid valve filter is not obstructed. If necessary, clean the filter (see par.2P). **This operation must be done exclusively from qualified and authorized technicians.**
6. Check the correct functioning of the pressure switch, hose and air trap or if obstructed. **This operation must be done exclusively from qualified and authorized technicians.**

**THE MACHINE DOES NOT DRAIN THE WATER OUT?**

1. Check if the overflow pipe has been removed.
2. Check if all filters inside the tank are not obstructed from dirt particles. If necessary, clean them out (see par.3D).
3. Check if the drain outlet hose and water drain line are not obstructed. If air is present inside the drain hose, gently move / repositioned it to eliminate the air bubble.
4. Check if the height of the drain hose is correctly installed (see par.2F). If not on the floor, the machine requires the drain pump *optional*. If the drain pump is installed check its functioning. **This operation must be done exclusively from qualified and authorized technicians.**

**THE MACHINE DOES NOT WASH WELL?**

1. Check if the filters are obstructed or very dirty. If necessary, clean all filters (see par.3D).
2. Check if the wash arm jets are obstructed or very dirty. If necessary, clean all jets (see par.3D).
3. Check if presence of heavy foam inside the tank. If necessary, adjust the quantity of detergent used (see par.2H).
4. Check the correct position of the dishes inside the rack (see par.3A).

## THE MACHINE DOES NOT RINSE WELL?

1. Check if the wash arm jets are obstructed or very dirty. If necessary, clean all jets (see par.3D).
2. Check if the solenoid valve filter is not obstructed. If necessary, clean the filter (see par.2N). **This operation must be done exclusively from qualified and authorized technicians.**
3. Check if the inlet water pressure satisfies the table chart (see par.2C). If necessary, install a pressure reducer or an external pressure pump. **This operation must be done exclusively from qualified and authorized technicians.**

## PRESENCE OF CONDENSATION / STAINS / STREAKS ON GLASSES?

1. Check the level of the rinse aid inside the bin. If necessary, fill this with the product (see par.2H).
2. Check the quantity and type of the rinse aid used (see par.2H).
3. Call the technical service to verify the correct adjustment of the rinse aid (see par.2H).
4. Check the correct rinsing temperature (see **quick guide**). The temperature might vary from 60°C to 85°C based on the selected cycle.
5. At the end of the wash cycle remove the rack with the washed glasses and wait few minutes before touching the glasses to let them dry.

## HIGH PRESENCE OF FOAM INTO THE TANK?

1. Check if the machine has reached the correct temperature before starting the wash cycle and the green light is ON.
2. Check the quantity and type of detergent used (see par.2H). If pre-washed remove any presence of detergent before entering the dishes inside the machine.
3. Call the technical service to verify the correct adjustment of the detergent dosing pump *optional* (see par.2H).
4. Use of foaming detergent product is not recommended. To remove presence of foam, drain out the water and clean the tank before starting a new wash cycle.

## SIGNS OF CORROSION INTO THE TANK?

1. DO NOT use rinse aid or detergent with a high presence of chlorine or chemical products such as bleach or similar.
2. DO NOT introduce iron dishes or dishes previously cleaned with steel wool or metallic parts directly in contact with the surface of the tank.
3. DO NOT leave salt residues on the surface of the tank while filling the salt container (watersoftener models).
4. In case of signs of corrosion, clean the surface with specific products without scratching the treated part.

THE MANUFACTURER RESERVES THE RIGHT TO MAKE USEFUL AND/OR NECESSARY MODIFICATIONS TO THE PRODUCT AND TO THIS MANUAL.

THE MANUFACTURER DECLINES ANY RESPONSIBILITY IF THE RULES INCLUDED ON THIS MANUAL ARE NOT STRICTLY OBSERVED.